



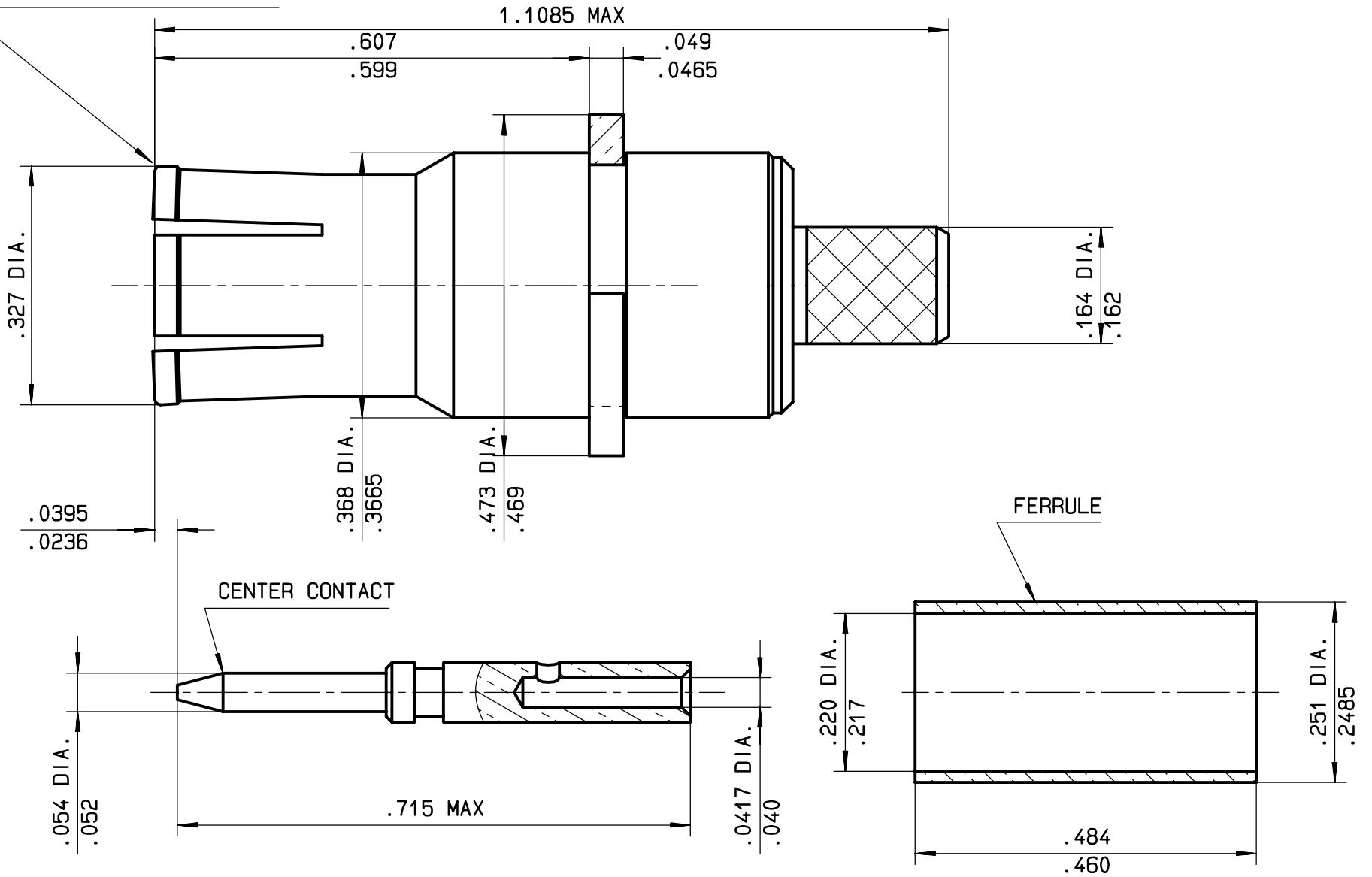
Series
DSX

SIZE 3 COAXIAL PIN CONTACT
FOR RG142/U CABLE
/

Issue:
09/28/98

Page
1 / 2

OUTER CONTACT SUB ASSEMBLY



MATERIAL

OUTER CONTACT : BERYLLIUM COPPER PER ASTM-B-196
INSULATOR : PTFE PER ASTM-D-1710 OR EQUIVALENT
CENTER CONTACT : BRASS PER QQ-B-626
FERRULE : ANNEALED BRASS

FINISH :

ALL METAL PARTS : PLATING .00005 INCH OF GOLD PER MIL-G-45204 type I or II grade C or D class 1
over nickel per QQ-N-290

ELECTRICAL CHARACTERISTICS :

IMPEDANCE : 50 Ω
DIELECTRIC WITHSTANDING VOLTAGE : 1500 Volts R M S at sea level
INSULATION RESISTANCE : ≥5000 MΩ
CONTACT RESISTANCE PER CONTACT : ≥5 mΩ
VSWR : 1,3 from DC to 5000 MHz

WIRING INSTRUCTIONS (SEE PAGE 2/2)

This information is given as an indication. In the continual goal to improve our products, we reserve the right to make any modifications judged necessary.

4112-9610

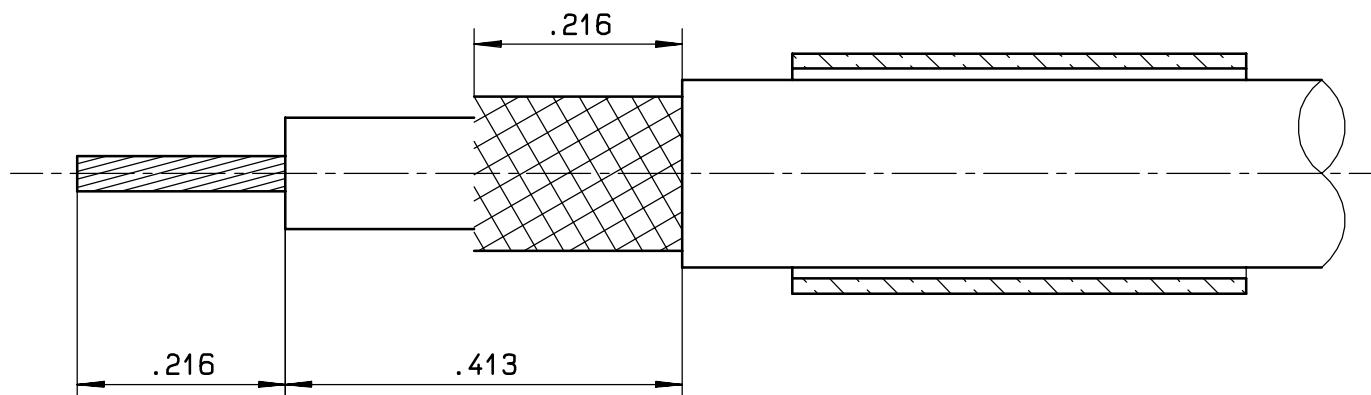
CREATION				
PEN: /				
NOM: MARIE				
DATE: 01/28/86	09/28/98	REDRAWN	GOMBERT	
APPR.: .	Issue	Revisions	Name	Approved



WIRING INSTRUCTIONS

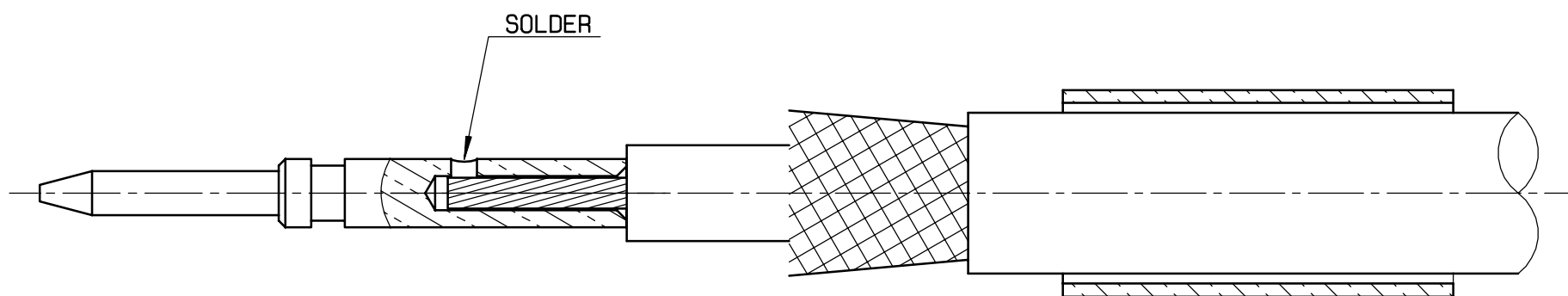
STEP 1

TRIM BRAID, DIELECTRIC AND CENTER CONDUCTOR TO DIMENSIONS INDICATED
SLIDE THE FERRULE ON THE CABLE



STEP 2

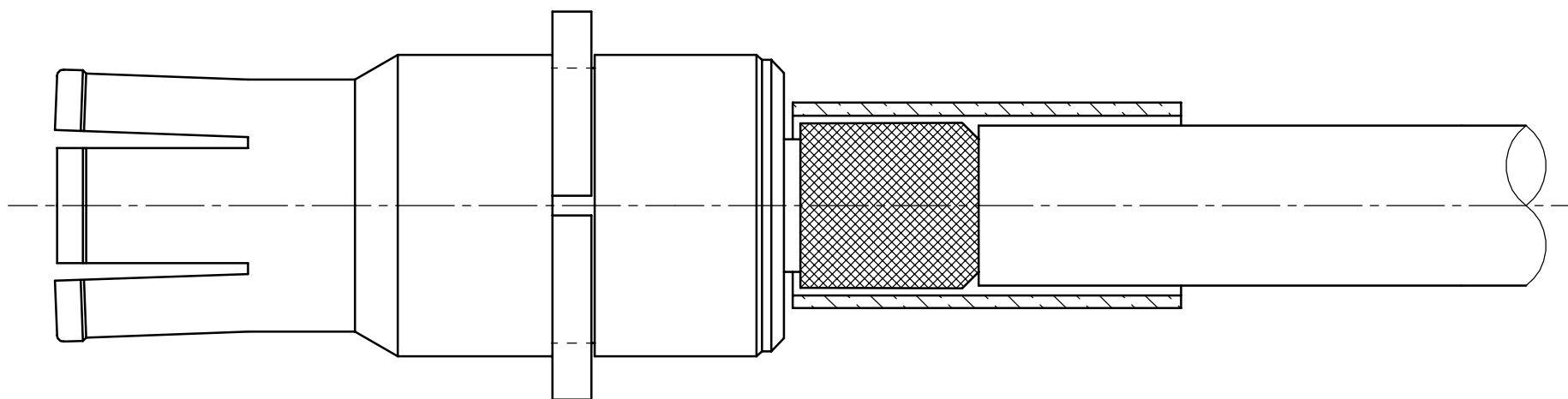
INTRODUCE CENTER CONDUCTOR INTO CENTER CONTACT SOLDER CENTER CONTACT



STEP 3

SLIDE CENTER CONTACT INTO THE OUTER CONTACT .
ENSURING THAT IT'S PUSHED HOME AND THAT THE REAR KNURLED BARREL IS UNDER THE BRAID
SLIDE THE FERRULE OVER THE BRAID AND CRIMP

CRIMPING TOOL : M 22520/5-01 (RADIAL 282293)
DIE : M 22520/5-05 (RADIAL 282246)
HEX A (.2126/FLATS)



This information is given as an indication. In the continual goal to improve our products, we reserve the right to make any modifications judged necessary.